



Parka[®] Cuticle Supplement

POWERED BY **SureSeal[™]**
BIOFILM TECHNOLOGY

The First Line of Defense: The Cuticle

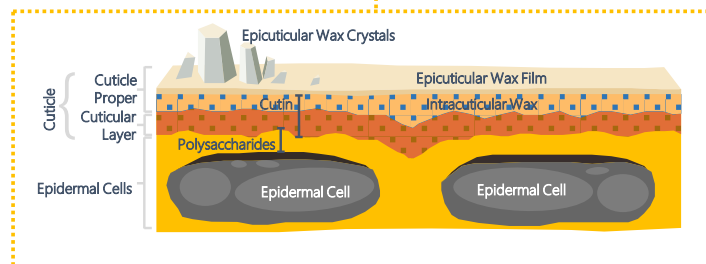
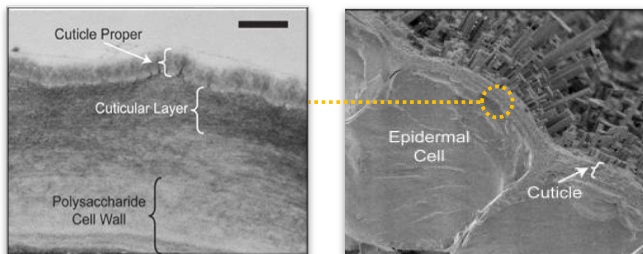
The cuticle is a plant's first line of defense between the environment and the epidermal cells. It protects against environmental and physiological stress early in development through cell elongation when fruits and vegetables are expanding rapidly in size. Lack of an adequate cuticle can negatively impact fruit quality and increase the potential of physiological disorders, such as sunburn and cracking.

What is the cuticle?

- Protective film covering the surface of leaves, young shoots & fruit
- Composed of lipids and polysaccharides impregnated with wax
- Wax, resin and salts can deposit on the surface as crystals
- Synthesized exclusively by the epidermal cells
- Inert, continuous layer and resistant to oxidation

What is the role of the cuticle?

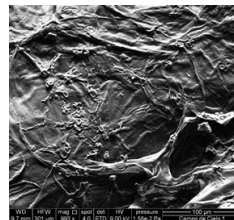
- First line of defense between the environment and the epidermal cells
- Regulates water loss and uptake
- Acts as a barrier, restricting pathogen infection
- Protects against UV radiation
- Provides mechanical support



What is Parka?

The components of Parka are very similar to the already existing cuticle. Parka is a phospholipid and polysaccharide based coating material designed to supplement the naturally occurring cutin and waxy-layers of the plant's cuticle. Its unique traits provide an additional layer of protection against numerous fruit quality challenges resulting in:

- Less sunburn
- Reduced cracking
- Improved overall fruit quality
- Increase marketable yields



Parka coated fruit cuticle



ELASTIC

Coating flexes & expands with plant & fruit growth.



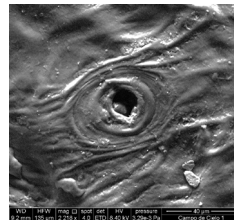
HYDROPHOBIC

Repels water.



PERMEABLE

Allows continued transpiration and gas exchange. Not an antitranspirant.



Parka coated leaf cuticle with open stomata



EDIBLE

Made up of food grade ingredients



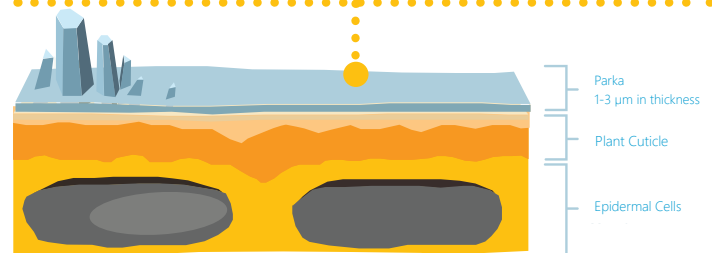
CLEAR

Leaves no residue



COMPATIBLE

High tank mixing capability
No surfactant needed



For more information on Parka, contact your Cultiva Representative:

Molly Mathews / Technical Sales Rep: Northern CA / 530-632-4923
mmathews@cultiva.com

Thiago Moraes / Regional Sales Manager: PNW/ 509-668-1352
tmoraes@cultiva.com

Matt Imoto / Regional Sales Manager: South West/CA / 559-553-5322
mimoto@cultiva.com

Victoria Towers / R&D Manager / 503-779-8551
vtowers@cultiva.com

Brian Tipton / VP of Research and Development / 509-859-4031
btipton@cultiva.com



Cultiva LLC
4780 West Harmon Ave., Suite 6, Las Vegas, NV 89103
(888) 638-1955 • www.cultiva.com